









2024 Membership Application

Please check the box that reflects your annual Healthy Pine River membership commitment.

Your annual \$5 dues are **included** in your donation to simplify the donation process and emphasize the importance of funding our mission.

	\$5		\$10
	\$25		\$50
	\$100		\$250
	\$500		Other: ____

Name: _____

Address: _____

City: _____ State: _____ Zip: _____

Email: _____

Phone #: _____

Mail completed membership form and payment to: Healthy Pine River, P.O. Box 993, Alma, MI 48801 *Make checks out to Healthy Pine River*

OR

Application and Payment are available online at: www.healthypineriver.org/join-us



Who is Healthy Pine River?

Our mission is to restore the Pine River and its tributaries to a healthy and beautiful state.

We unite residents, area farmers, state and local governments, schools, and all those committed to restoring the Pine River's natural waterways and tributaries.

HPR Contact Information:

Email: healthypineriver@gmail.com

Address:

P.O. Box 993
Alma, MI 48801

For more information visit us at:

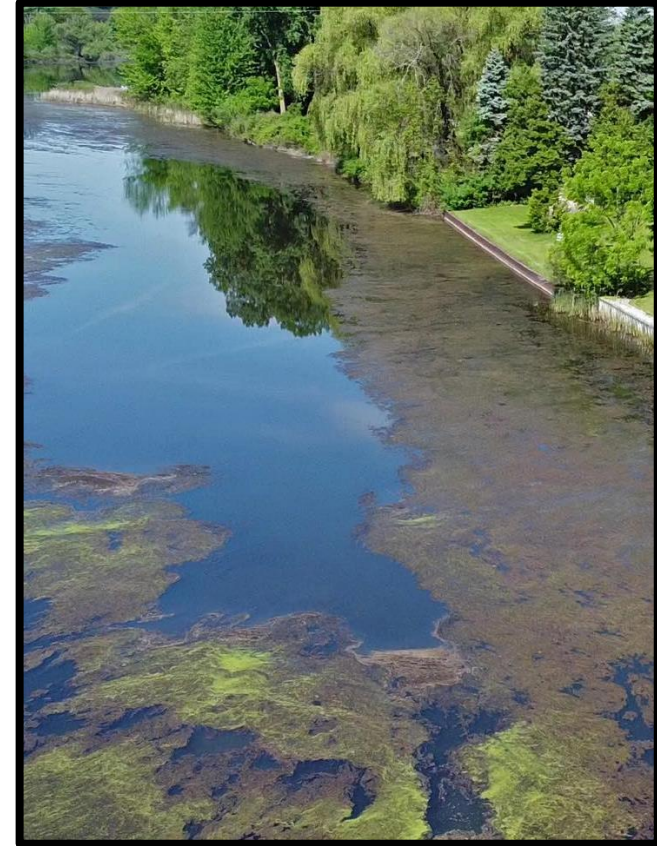
www.healthypineriver.org

Membership Meetings are held on the 2nd Thursday of the month at 7:00 p.m. at the Alma Public Library.

Healthy Pine River is registered as a §501(c)(3) Non-Profit organization. *Donations are tax deductible.*



Follow Us @HealthyPineRiver



**2024
Membership
Application**

Environmental Issues in the Pine River

Algal Blooms and Increased Vegetation

An excess of nutrients from the following sources is leading to worsening algal blooms and increased vegetation:

- Septic Systems in disrepair lead to untreated wastewater entering surface waters (e.g. rivers, creeks, streams, drainage ditches)
- Excess livestock manure application to farm fields result in manure runoff into drainage ditches connecting to the Pine River

Alma and St. Louis Impoundment Degradation

- High E. Coli Levels (It is advised that you do NOT consume fish from these areas)
- Sediment drop, which allows the river to become stagnate and shallow

Healthy Pine River works for our community to be the solution to the Pine River's degradation.

Making a Difference in our Community...

Research and Monitoring

- Annual water testing via Alma College
- Alma and St. Louis dams and reservoir research on causes of degradation
- Surveys with residents

Education and Support Services

- Septic support services to rural communities such as Elwell, Elm Hall, and Sumner
- Community education on contamination sources of the Pine River
- Community education on potential health risks from the Pine River

Connecting the Community

- Re-establishment of the Farm Engagement Committee to promote sustainable farm practices.
- Sponsoring community events that promote sustainability and stewardship.
- Directly working with local governments and State of Michigan agencies.
- Creating new fundraising opportunities such as the new "Friends of the Pine River" campaign.
- Adding members to the HPR team including new staff, volunteers, and board members.



Why Should YOU join Healthy Pine River?

We are the only group exclusively dedicated to improving and protecting the Pine River. Your membership will be a vital part of the positive change we are making. Together, we will ensure a healthier Pine River for our children and generations to come.

If not us, who...

If not now, when...

This project has been funded wholly or in part through Michigan Department of Environment, Great Lakes, and Energy's Nonpoint Source Program using Watershed Council Support funds.

Healthy Pine River will not share any personal information (phone number, email, donation amount, etc.).